

ANGELINA

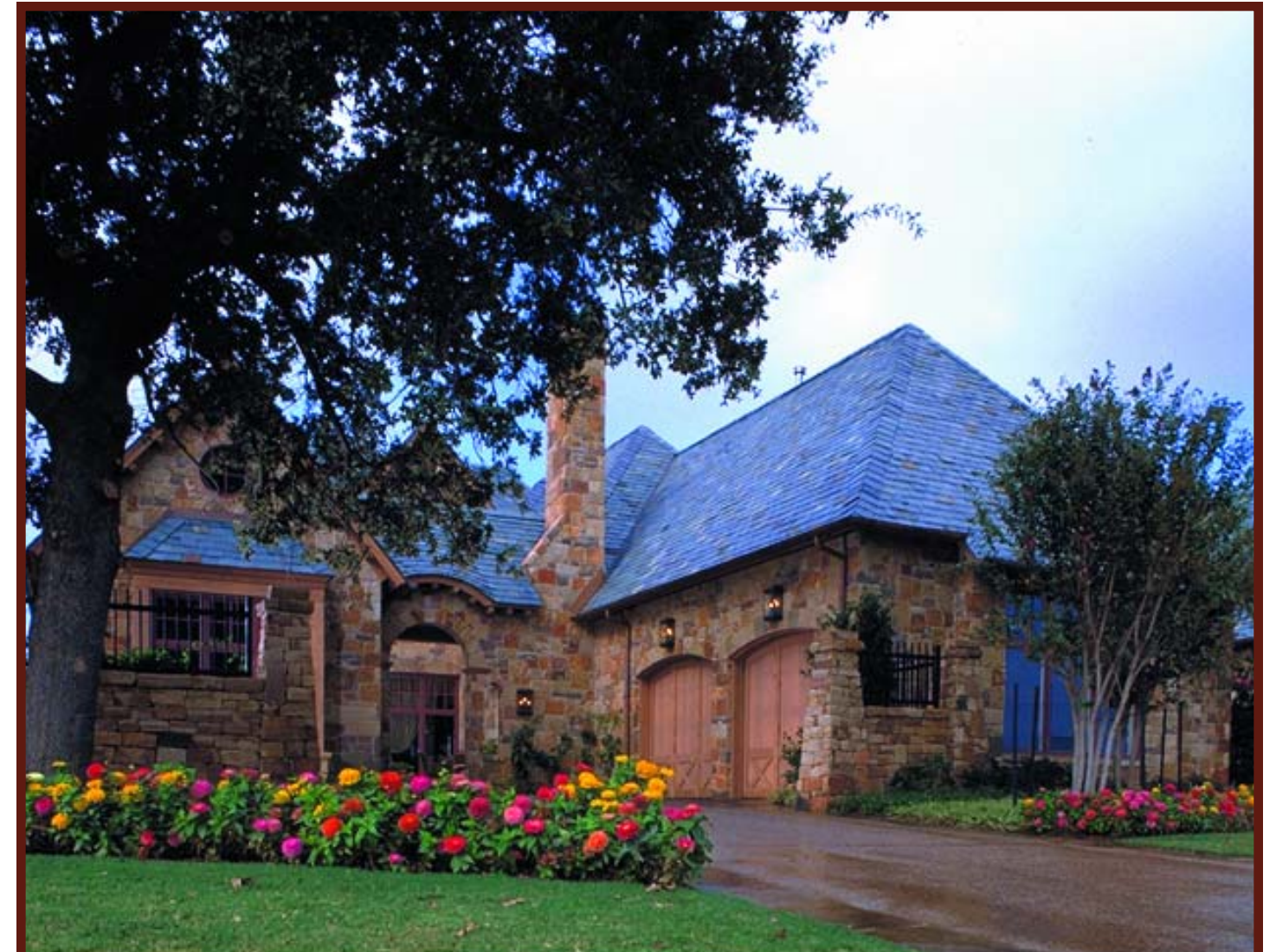
FEATURES & BENEFITS

EXTERIOR:

- Charming natural slate roof.
- Copper gutters, downspouts & exterior accents.
 - Solid wood windows by Kolbe & Kolbe™.
- Luxurious fireplace and patio area with Viking™ built-in barbeque for year round entertaining.
 - Sophisticated showplace pool (optional).
 - Spectacular golf course views.
- Extensive landscaping in front and backyard.

INTERIOR:

- The Contemporary Interior emphasizes the crisp purity of the architectural geometry with the warmth of natural materials. This setting is the perfect backdrop for an eclectic collection of art and furnishings.
 - Solid eight-foot mahogany doors throughout.
 - Viking™ kitchen appliances.
 - Waterworks™ kitchen and bath fixtures throughout.
- Pre-wired for premium audio, security and home automation systems.
 - Custom stone and granite counter tops and tile designs.



Vaquero

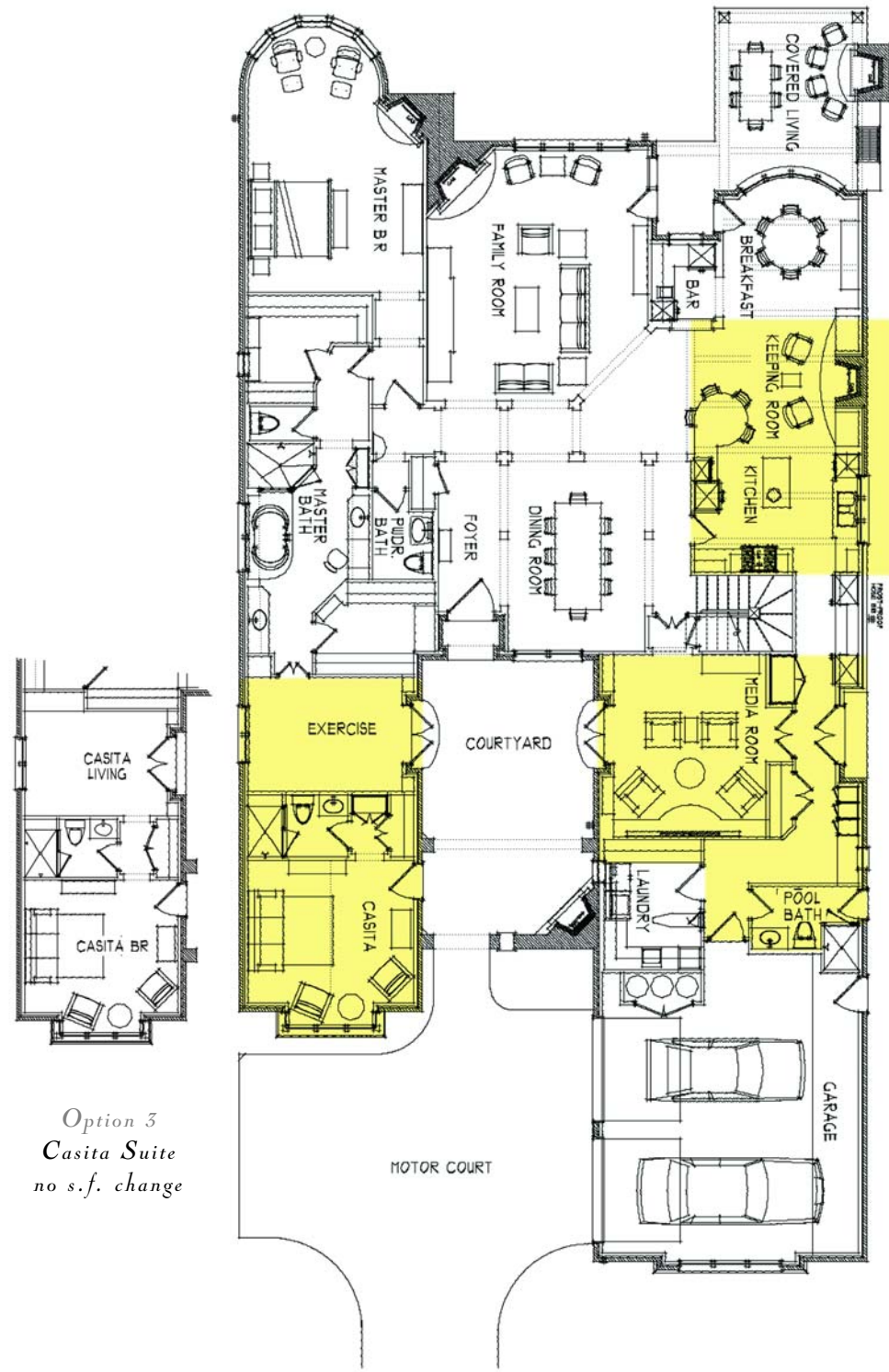
VILLAGE HOMES | ANGELINA

VAQUERO RESIDENTIAL REALTY, LLC

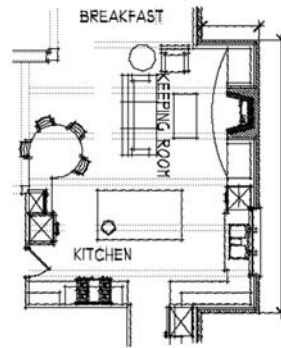
1405 FOUNTAIN GRASS COURT • WESTLAKE, TEXAS 76262

SALES OFFICE TELEPHONE: 817.430.6600 | SALES OFFICE FAX: 817.430.6601

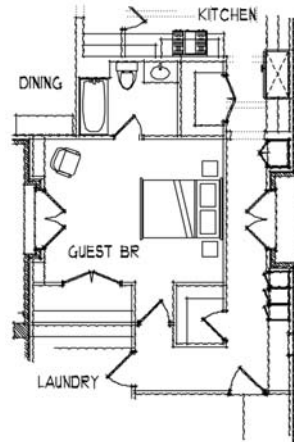
www.vaqueroclub.com



*Option 3
Casita Suite
no s.f. change*



*Option 1
Keeping/Kitchen
adds 120 s.f.*



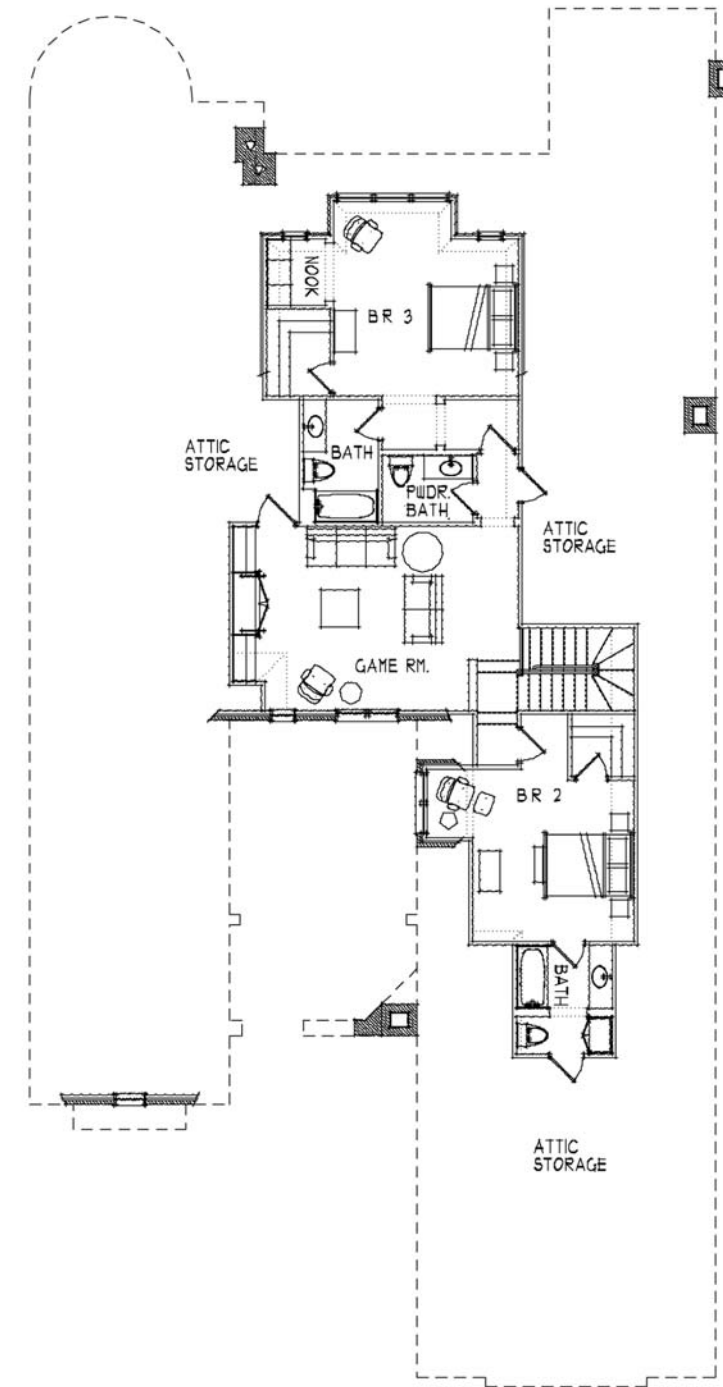
*Option 2
Guest Bedroom
no s.f. change*

First Floor

*Dimensions shown are approximate
and subject to change per site specific
restrictions and developer approval.*

*First Floor = 3765 s.f.a.c.
Second Floor = 1170 s.f.a.c.
Total = 4935 s.f.a.c.*

Typical: Not to Scale



Second Floor

*Dimensions shown are approximate
and subject to change per site specific
restrictions and developer approval.*

Second Floor = 1170 s.f.a.c

Typical: Not to Scale