

NECHES

FEATURES & BENEFITS

EXTERIOR:

- Charming natural slate roof.
- Copper gutters, downspouts & exterior accents.
- Solid wood windows by Kolbe & Kolbe™.
- Garden cabana with outdoor fireplace.
- Custom designed heated pool and spa for year round use (optional).
- Barbeque lover's dream area fully equipped with Viking™ built-in barbeque range.
 - Stone garden and potting shed.
 - Spectacular golf course views.
 - Extensive landscaping in front and backyard.

INTERIOR:

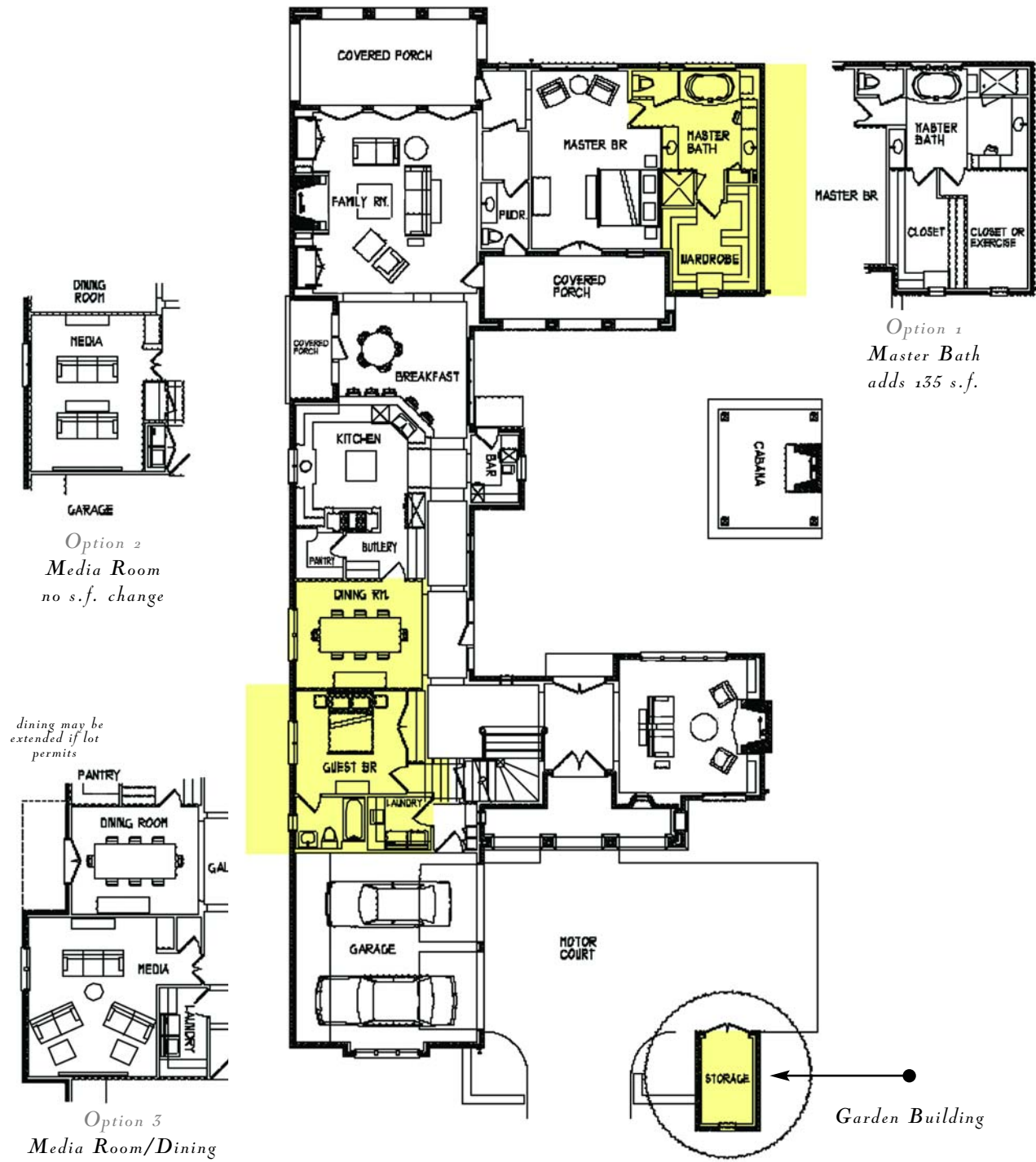
- Shown in the Craftsman interior featuring handcrafted wood details throughout.
 - Solid eight-foot mahogany doors and white oak flooring.
 - Viking™ kitchen appliances.
 - Waterworks™ kitchen and bath fixtures throughout.
 - Hand-stenciled motifs in master bedroom and dining room.
- Pre-wired for premium audio, security and home automation systems.
- Custom stone and granite counter tops and tile designs.



Vaquero

NECHES | VILLAGE HOMES

VAQUERO RESIDENTIAL REALTY, LLC
1405 FOUNTAIN GRASS COURT • WESTLAKE, TEXAS 76262
SALES OFFICE TELEPHONE: 817.430.6600 | SALES OFFICE FAX: 817.430.6601
www.vaqueroclub.com

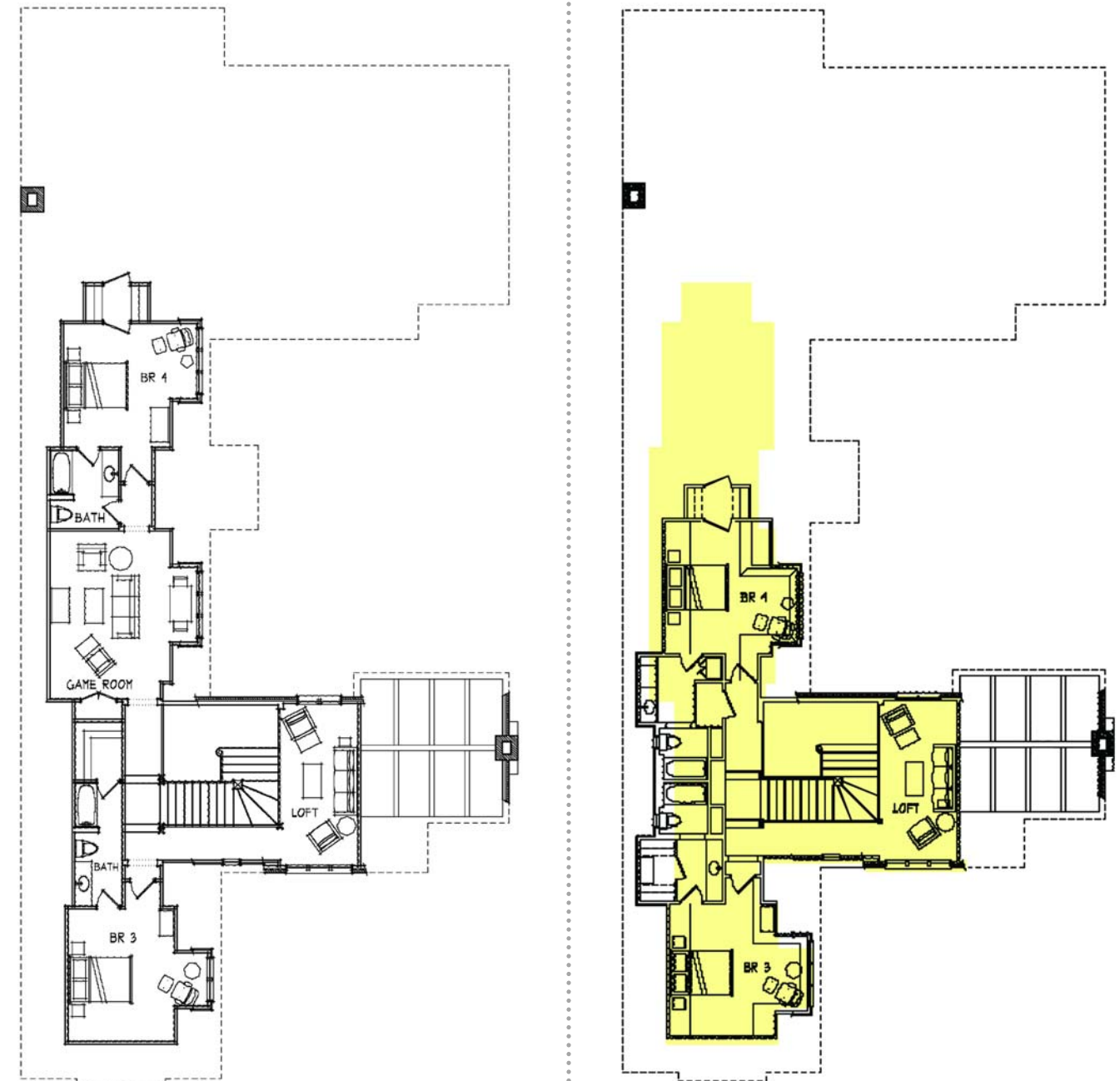


First Floor

Dimensions shown are approximate and subject to change per site specific restrictions and developer approval.

First Floor = 3217 s.f.a.c.
Second Floor = 1084 s.f.a.c.
Total = 4301 s.f.a.c.

Typical: Not to Scale



Second Floor

Dimensions shown are approximate and subject to change per site specific restrictions and developer approval.

Second Floor Option 1

Dimensions shown are Second Floor = 1086 s.f.a.c. Second Floor = 1351 s.f.a.c.

Typical: Not to Scale